

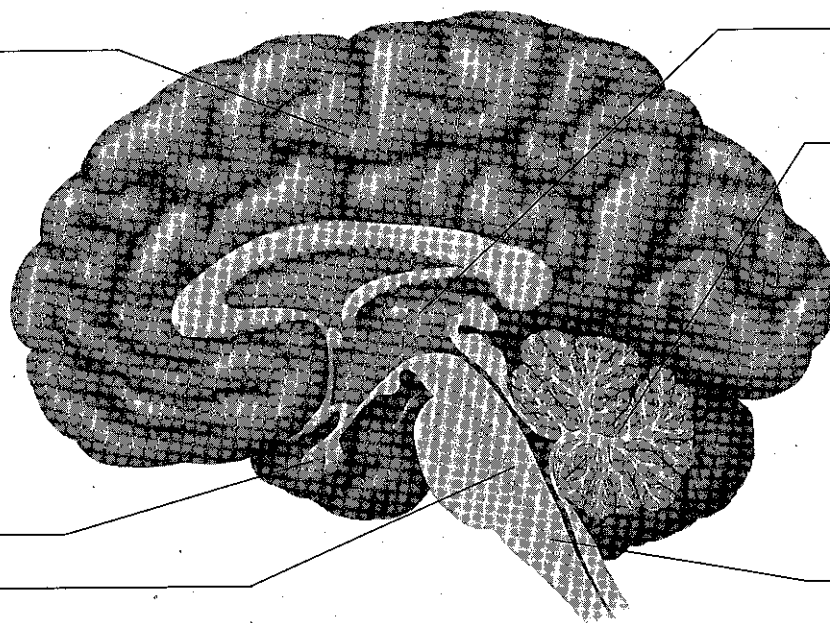
Early Brain Development**SECTION 9-1****Understanding Brain Structure**

Directions: The descriptions below explain some functions and characteristics of different parts of the brain. Write the name of the correct part of the brain in the space after its function. The same part of the brain may be used more than once. Then complete the diagram by writing the name of the brain part in the appropriate space.

Parts of the Brain

- | | |
|-------------------|--------------|
| • Thalamus | • Brain stem |
| • Spinal cord | • Cerebrum |
| • Pituitary gland | • Cerebellum |

1. Controls involuntary activities such as breathing. _____
2. Directs motor activities. _____
3. Controls the way emotions are expressed. _____
4. Coordinates the activities of the two sides of the body. _____
5. Secretes hormones that regulate growth. _____
6. Controls functions such as speech and memory. _____
7. Controls muscular coordination, balance, and posture. _____
8. Controls simple reflexes that do not involve the brain. _____
9. The cortex is the outer layer of this part of the brain. _____
10. Releases hormones that control metabolism and sexual development. _____



(Continued on next page)

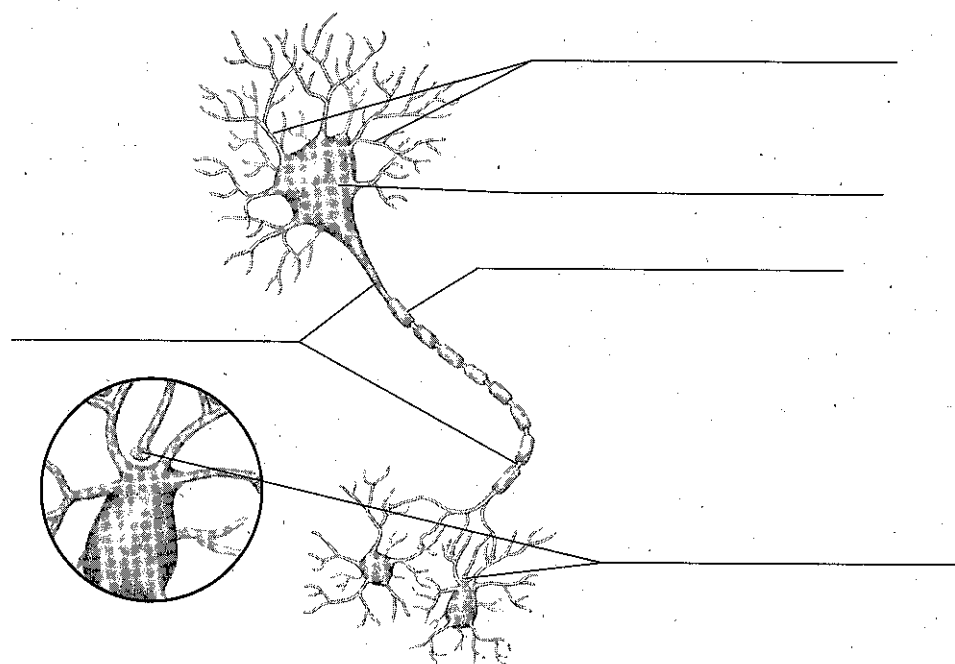
Early Brain Development

Section 9-1 continued

Directions: Choose terms from the box below to label the parts of a neuron. Write the term in the appropriate place on the diagram. In the spaces below the diagram, briefly summarize the function of each part in transmitting information between neurons.

Parts of a Neuron

- Axon
- Cell body
- Dendrite
- Myelin
- Synapse



Functions

Dendrite: _____

Cell body: _____

Axon: _____

Myelin: _____

Synapse: _____

